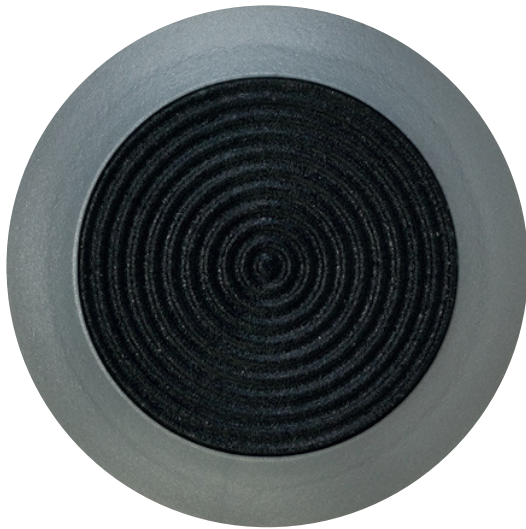


# POLYRESIN CLASSIC SILVER – BLACK TOP TEST RESULTS



## TACTILE GROUND SURFACE INDICATOR (DISCRETE)

<b>RANGE</b>	Polyresin Classic
<b>GROUP</b>	Warning Tactile
<b>MATERIAL</b>	Silver virgin and re-claimed UV and thermally stabilized high impact elastomeric based polymers
<b>FINISH</b>	Mill finish
<b>SUBSTRATE</b>	As to particular product/substrate type recommendation
<b>FIXING</b>	As to particular method for product/substrate type recommendation

## FEATURES

Black polymer insert with engraved, concentric circle design on horizontal face with silver body and smooth outer edge

Manufactured in Australia from virgin and re-claimed UV and thermally stabilized high impact elastomeric based polymers

Unique integrated 'HEX' shaft design for substrate mounting (patents and design registrations applied and granted)

Tested for compliance with AS/NZS 1428.4: [1992 & 2002]

Tested for compliance with the BCA Section D clause 3.8 [TGSIs]

Tested for compliance with slip resistance requirements as detailed in HB 197 (1999)

5 year on polymer for colour stability (polymer), 2 year installation warranty

DTAC's facility to reclaim, recycle and reinstate

## SLIP RESISTANCE TESTING

Important information about slip resistance ratings: To determine a classification of a slip resistance rating, see Australian Standards Hand Book 197: 1999 (HB 197), An Introductory Guide to Slip Resistance of Pedestrian Materials. This document outlines the minimum ratings of a location and situation of a pedestrian surface.

<b>TEST</b>	AS/NZS 4586:1999 APPENDIX A
<b>TYPE</b>	Wet Pendulum Test
<b>RATING 1</b>	Four S Slider = 46
<b>RATING 2</b>	TRRL Slider = 36
<b>CLASS</b>	Mean BPN = Class N/A
<b>REPORT</b>	(Intertile Pty Ltd test report) Available on request from DTAC

## LUMINANCE TESTING

Important information: To determine a luminance contrast between a substrate and the DTAC TGS node, see: AS/NZS 1428.4 2002, page 51-59, appendix F. As the testing for luminance is performed only on the 25mm face of the TGS (CSIRO test report 3380 L), INSAFE product IS-AS-PL-BLACK has been applied to this product. The colour of the disc insert (25mm) would fall within the mean luminance rating.

<b>TEST</b>	AS 1428:4 2002 APPENDIX F
<b>TYPE</b>	Access for people with disabilities
<b>RATING</b>	Luminance Reflectance rating / Dry 3.09 / Wet 1.91 / Mean 1.0-4.5
<b>REPORT</b>	(CSIRO test report 3380 L) Available on request from DTAC

<b>MELBOURNE SYDNEY</b>	<b>CANBERRA BRISBANE ADELAIDE</b>	<b>PERTH DARWIN HOBART</b>
<b>DTAC PTY LTD</b> ABN 41 093 070 127	Unit 4, 1-7 Friars Road Moorabbin Victoria Australia 3189 PO Box 2210 Moorabbin Victoria Australia 3189	T 1300 793 478 F 1300 780 628 estimating@dtac.com.au www.dtac.com.au

# POLYRESIN CLASSIC SILVER – BLACK TOP INSTALLATION

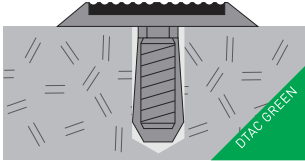
DTAC PTY LTD  
ABN 41 093 070 127

Unit 4, 1–7 Friars Road  
Moorabbin Victoria  
Australia 3189  
PO Box 2210  
Moorabbin Victoria  
Australia 3189

T 1300 793 478  
F 1300 780 628  
estimating@dtac.com.au  
www.dtac.com.au

## TYPE 1 SUBSTRATES

STONE, MASONRY, TIMBER, VINYL



**CODE** BS-PL-M8x18-HEX-PF-  
SILVER-BLACK

**FIXING** Drill and pressure fit

**NOTE** Any thick substrate where  
maximum hold is required  
without chemical anchoring

**GREEN** 100% recyclable, no adhesives

## TYPE 2 SUBSTRATES

VITRIFIED PORCELAIN, CERAMICS, GLASS, METALS



**CODE** BS-PL-M8x18-HEX-PF-  
SILVER-BLACK

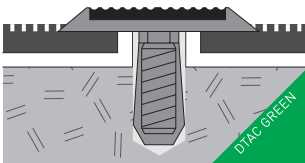
**FIXING** Diamond core/pressure fit

**NOTE** Any thick substrate where  
maximum hold is required  
without chemical anchoring

**GREEN** 100% recyclable, no adhesives

## TYPE 3 SUBSTRATES

CARPET, CARPET TILES



**CODE** BS-PL-M8x18-HEX-PF-  
SILVER-BLACK

**FIXING** Drill and pressure fit

**NOTE** Thin carpet without underlay  
(direct stick carpet/carpet tiles).  
Two stage installation process

**GREEN** 100% recyclable, no adhesives