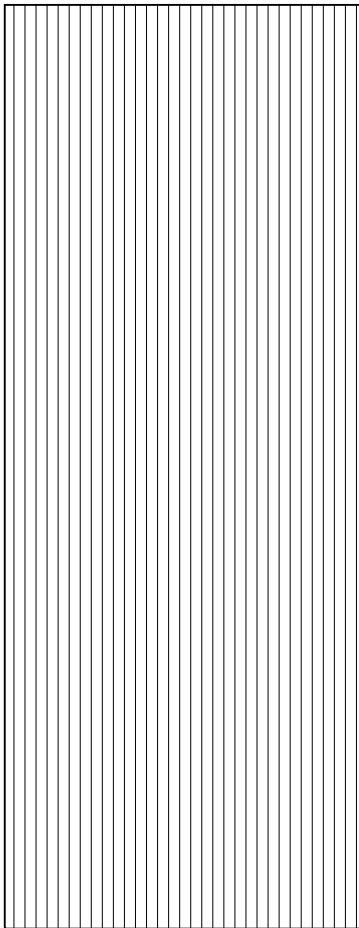


EDGING CORDUROY STAINLESS STEEL



EDGING

RANGE	Corduroy
GROUP	Edging Haute Couture Series
MATERIAL	Extruded 316 marine grade stainless steel
FINISH	Mill finish
SUBSTRATE	As to particular product/substrate type recommendation
FIXING	As to particular method for product/substrate type recommendation

FEATURES

Continuous corduroy engraving extending for the entire width and length of the section designed and manufactured by DTAC in Australia

Available in three exclusive DTAC Haute Couture sections of flat, angle or inlay (in or onto the finished substrate surface) in extruded solid 316 marine grade stainless steel

DTAC integrated hooped shafts for special project substrate mountings are also available for all three sections (patents and design registrations applied and granted)

Special substrate mounting are available on request

Suitable for all stable finished surfaces and substrates

Designed to comply with AS/NZS 1428.1 (2009) Design for Access and Mobility Part 1: General Requirements for Access – New Building Work

Designed to comply with the Building Code of Australia and Disability (Access to Premises – Buildings) Standards to meet the deemed-to-satisfy-provisions

Tested for compliance with slip resistance requirements as detailed in HB 197 (1999)

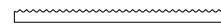
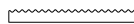
10 year product (316 stainless steel), 5 year product for colour stability (polymer inlays and inserts), 2 year installation warranty

Extended warranty and essential services maintenance options available on request

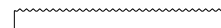
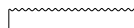
DTAC's facility to reclaim, recycle and reinstate

AVAILABLE SIZES

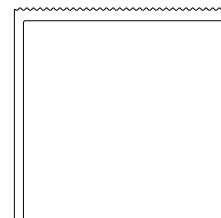
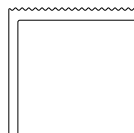
CODE	CORDUROY-SS-30x3	CODE	CORDUROY-SS-50x3
FLAT	W30 x T3 mm	FLAT	W50 x T3 mm



CODE	CORDUROY-SS-30x5	CODE	CORDUROY-SS-50x5	CODE	CORDUROY-SS-10x10
INLAY	W30 x T5 mm	INLAY	W50 x T5 mm	INLAY	W10 x T10 mm

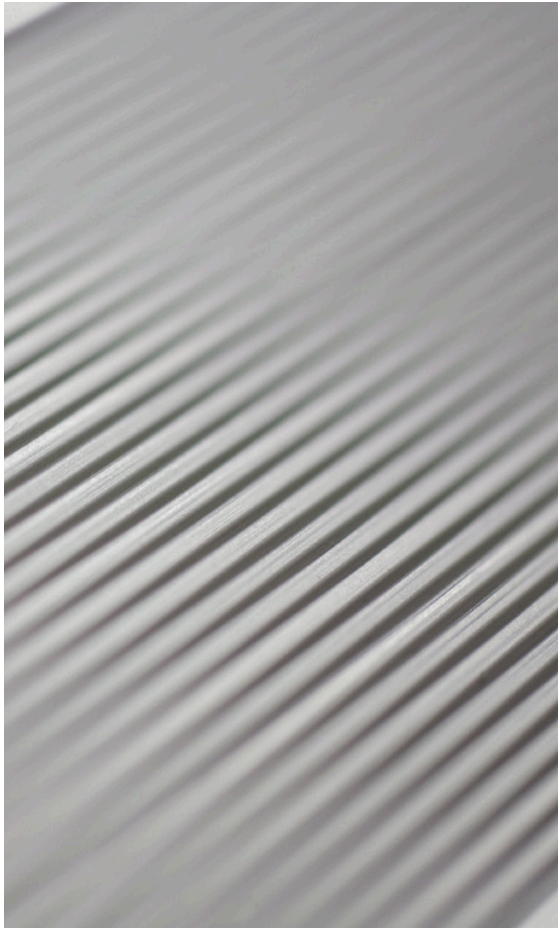


CODE	CORDUROY-SS-30x30x3	CODE	CORDUROY-SS-30x30x3
ANGLE	H30 x W30 x T3 mm	ANGLE	H50 x W50 x T3 mm



MELBOURNE SYDNEY	CANBERRA BRISBANE ADELAIDE	PERTH DARWIN HOBART
DTAC PTY LTD ABN 41 093 070 127	Unit 4, 1-7 Friars Road Moorabbin Victoria Australia 3189 PO Box 2210 Moorabbin Victoria Australia 3189	T 1300 793 478 F 1300 780 628 estimating@dtac.com.au www.dtac.com.au

EDGING CORDUROY STAINLESS STEEL



SLIP RESISTANCE TESTING

Important information about slip resistance ratings: To determine a classification of a slip resistance rating, see Australian Standards Hand Book 197: 1999 (HB 197), An Introductory Guide to Slip Resistance of Pedestrian Materials. This document outlines the minimum ratings of a location and situation of a pedestrian surface.

TEST	AS/NZS 4586:1999 APPENDIX A
TYPE	Wet Pendulum Test
10MM	Tested across a 10mm wide section
RATING 1	Four S Slider = TBA
RATING 2	TRRL Slider = TBA
CLASS	Mean BPN = Class N/A
REPORT	Available on request from DTAC
30MM	Tested across a 30mm wide section
RATING 1	Four S Slider = TBA
RATING 2	TRRL Slider = TBA
CLASS	Mean BPN = Class N/A
REPORT	Available on request from DTAC
50MM	Tested across a 50mm wide section
RATING 1	Four S Slider = TBA
RATING 2	TRRL Slider = TBA
CLASS	Mean BPN = Class N/A
REPORT	Available on request from DTAC

LUMINANCE TESTING

Important information: To determine a luminance contrast between a substrate and the DTAC EDGING, see: AS/NZS 1428.1 2009 Page 59-98, appendix B, Parts B1-B4 and Table B1. Please note: Appendix B par B5, (The Measurement of Luminance Contrast – On Site), has not been included in these test results given that the substrate/finished surface that the edging will be installed onto is unknown. On site luminance testing can be conducted by DTAC but will incur additional consultation fees to that of the services offered by DTAC for this product range [DTAC Pty Ltd January 2010].

TEST	AS 1428.1 2009 APPENDIX B PART B3
TYPE	Design for Access and Mobility Part 1: General Requirements for Access – New Building Work
RATING	Luminance Reflectance rating / Dry TBA / Wet TBA
REPORT	Available on request from DTAC

MELBOURNE
SYDNEY

CANBERRA
BRISBANE
ADELAIDE

PERTH
DARWIN
HOBART

DTAC PTY LTD
ABN 41 093 070 127

Unit 4, 1-7 Friars Road
Moorabbin Victoria
Australia 3189
PO Box 2210
Moorabbin Victoria
Australia 3189

T 1300 793 478
F 1300 780 628
estimating@dtac.com.au
www.dtac.com.au

EDGING CORDUROY STAINLESS STEEL INSTALLATION

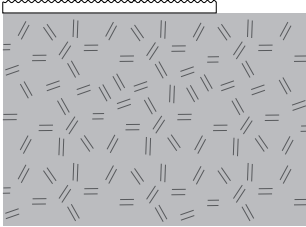
DTAC PTY LTD
ABN 41 093 070 127

Unit 4, 1-7 Friars Road
Moorabbin Victoria
Australia 3189
PO Box 2210
Moorabbin Victoria
Australia 3189

T 1300 793 478
F 1300 780 628
estimating@dtac.com.au
www.dtac.com.au

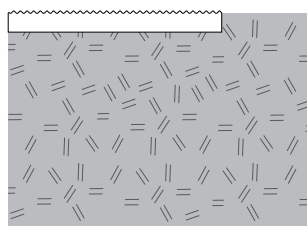
TYPE 1 SUBSTRATES

STONE, MASONRY, TIMBER, VINYL



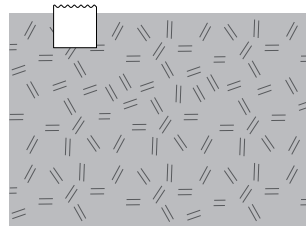
FIXING Screw fixed or adhesive

NOTE DTAC integrated hooped shafts for substrate mountings are available on request



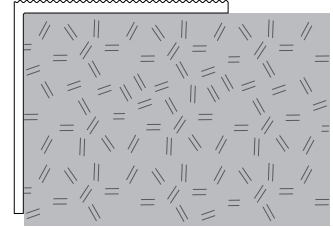
FIXING Screw fixed or adhesive

NOTE DTAC integrated hooped shafts for substrate mountings are available on request



FIXING Screw fixed or adhesive

NOTE DTAC integrated hooped shafts for substrate mountings are available on request

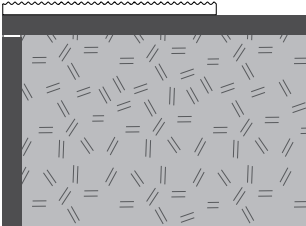


FIXING Screw fixed or adhesive

NOTE DTAC integrated hooped shafts for substrate mountings are available on request

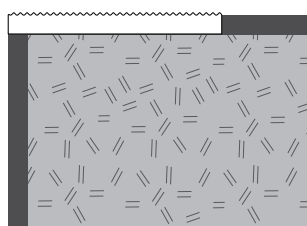
TYPE 2 SUBSTRATES

VITRIFIED PORCELAIN, CERAMICS, GLASS, METALS



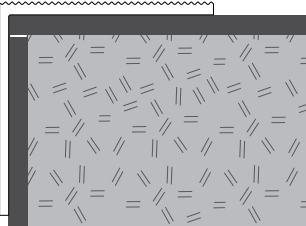
FIXING Screw fixed or adhesive

NOTE DTAC integrated hooped shafts for substrate mountings are available on request



FIXING Screw fixed or adhesive

NOTE DTAC integrated hooped shafts for substrate mountings are available on request

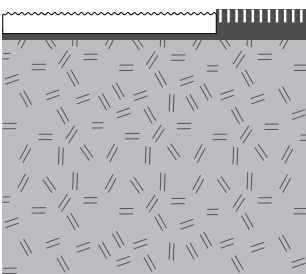


FIXING Screw fixed or adhesive

NOTE DTAC integrated hooped shafts for substrate mountings are available on request

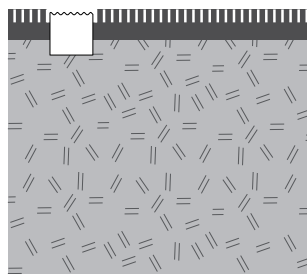
TYPE 3 SUBSTRATES

CARPET, CARPET TILES



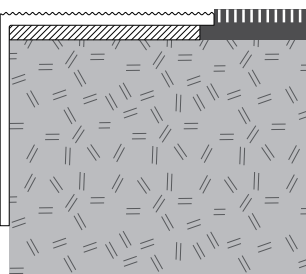
FIXING Screw fixed or adhesive

NOTE DTAC integrated hooped shafts for substrate mountings are available on request



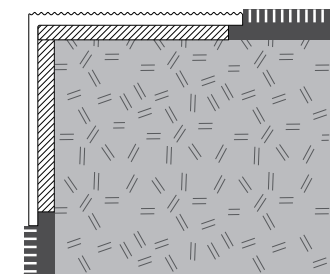
FIXING Screw fixed or adhesive

NOTE DTAC integrated hooped shafts for substrate mountings are available on request



FIXING Screw fixed or adhesive

NOTE DTAC integrated hooped shafts for substrate mountings are available on request



FIXING Screw fixed or adhesive

NOTE DTAC integrated hooped shafts for substrate mountings are available on request